

Video2Photo Knowledge Base

ISSUE

Video2Photo doesn't start up

Symptom

Video2Photo cannot start-up because is raising and error dialog
(e.g. Runtime error 216 at xxxxxxxx)

Explanation

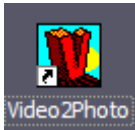
If you have installed Windows XP ServicePack 2 you will experience problems starting up Video2Photo if you don't turn its compatibility mode to Windows 98/ME.

How to fix?

Proceed with the following steps:

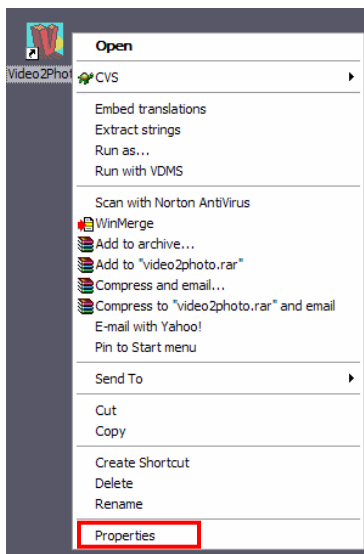
Step 1

Identify the Video2Photo Icon on your desktop, select it and click the Mouse Right Button to get the context popup



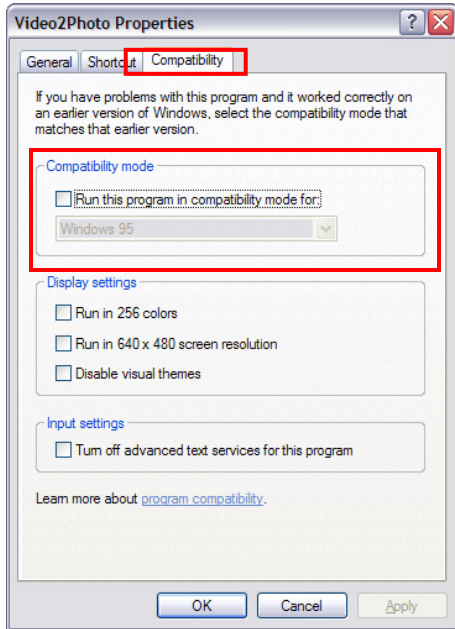
Step 2

In the appearing context menu select the last item called Properties:



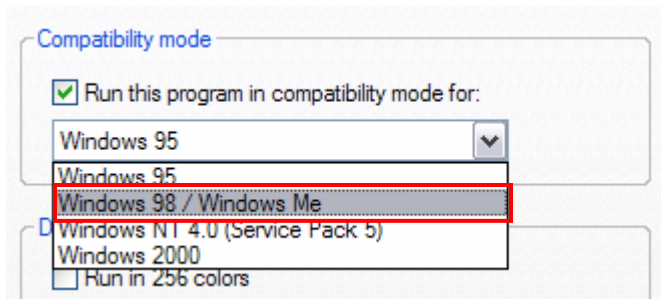
Step 3

In the "Video2Photo Properties" window select the tab named "Compatibility"



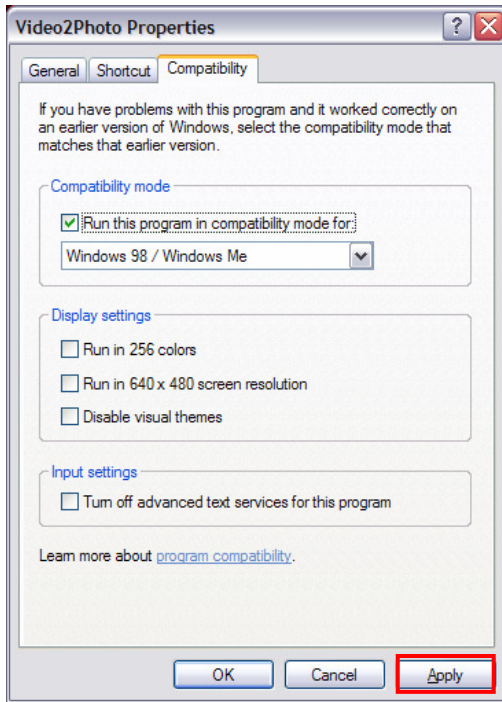
Step 4

In the "Compatibility Mode" Section, activate the checkbox named "Run this program in compatibility mode for:" and select in the list: Windows 98/ME



Step 5

Press "Apply" button and close the Video2Photo Properties window.



Step 6

Start Video2Photo by clicking the corresponding icon.